

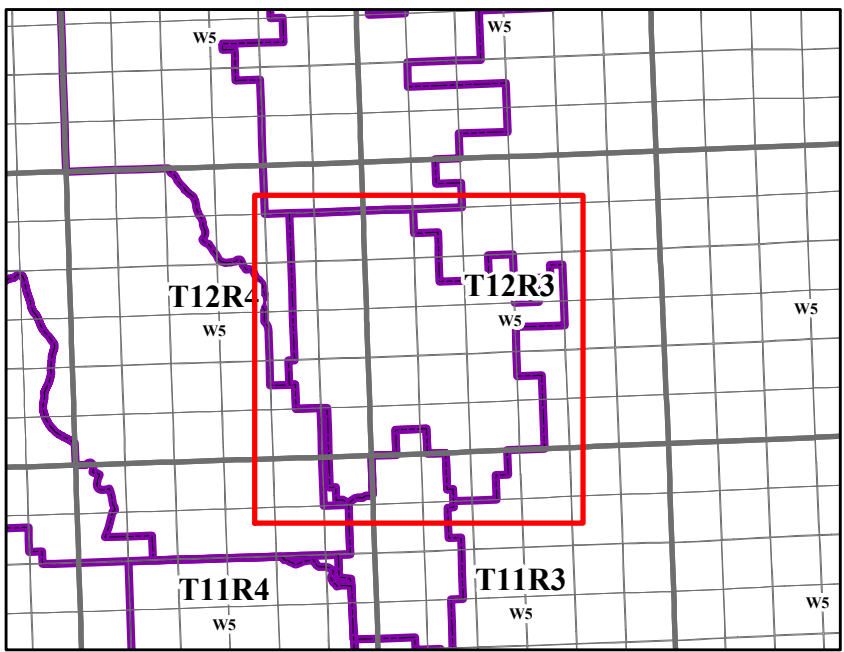


Spray Lake Sawmills

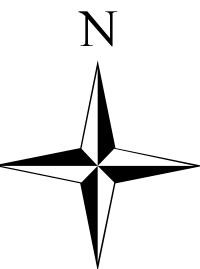
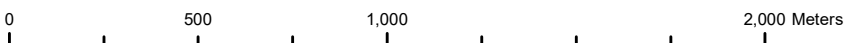
2020-2024  
Preliminary Forest Harvest Plan  
CTLC020025 (White Creek)  
(North Livingstone - Livingstone)

Legend

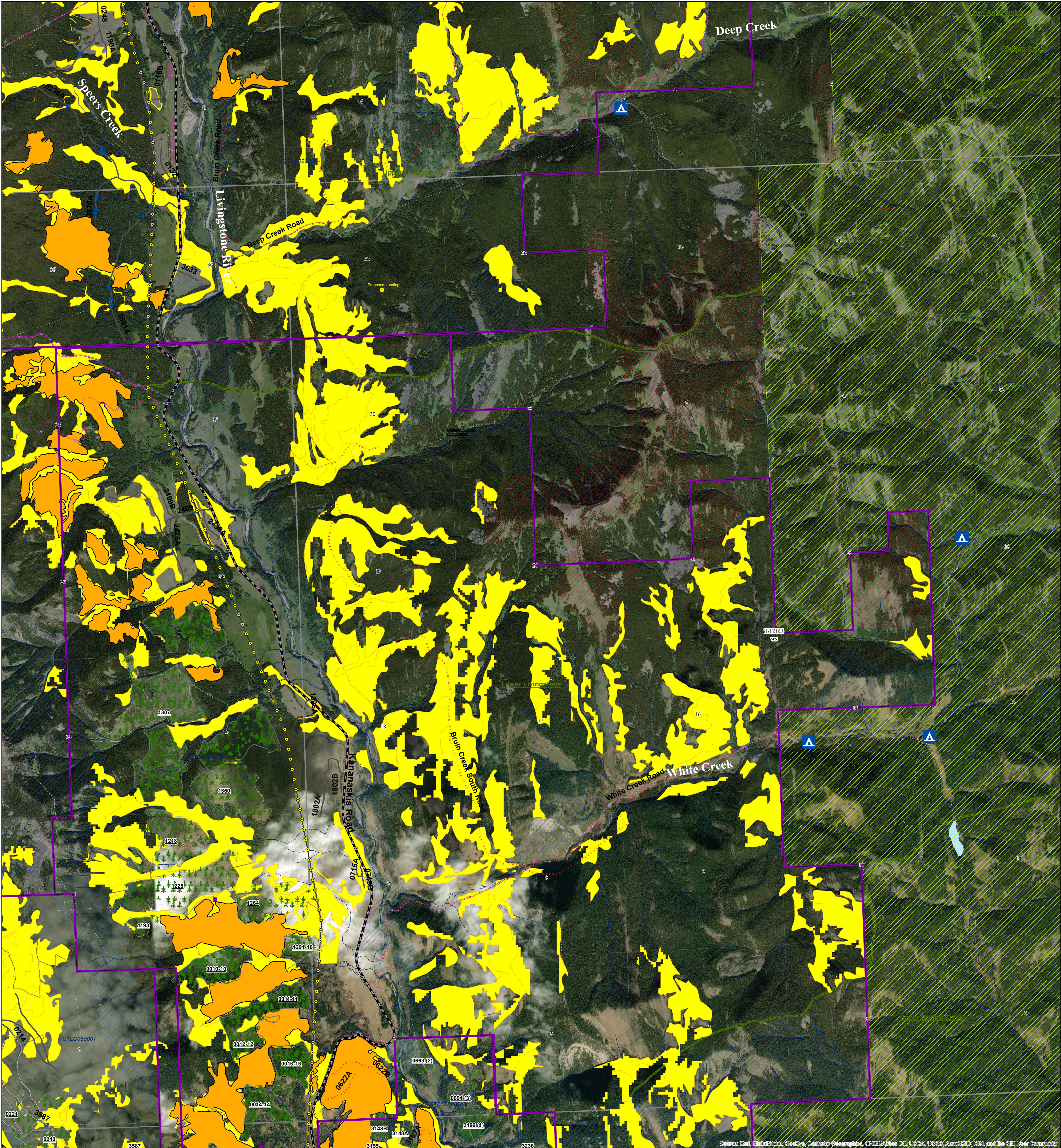
<b>Installations</b>	<b>Roads</b>
Bridge, Active	Constructed
Box Crib, Active	Planned
Cattle Guard, Active	Reclaimed
Gate, Active	
Logfill, Active	<b>Cutblocks</b>
Pipeline, Active	Harvested
Bridge, Planned	Laid Out
Box Crib, Planned	Preliminary
Logfill, Planned	Reforested
Pipeline, Planned	
Bridge, Reclaimed	<b>Transportation</b>
Box Crib, Reclaimed	Road - Gravel
Logfill, Reclaimed	Road - Unimproved
Pipeline, Reclaimed	Truck Trail
Box Crib, Stabilized	Road - Unclassified
	Cutline/Trail
<b>IRP - C5</b>	<b>Landuse</b>
Critical Wildlife	Grazing Allotments
Prime Protection	Provincial Rec Area
	PNT
<b>Hydrology</b>	Heritage Rangeland
Major Hydrography	Ecological Reserve
Streams	Natural Area
<b>Watercourses</b>	Wilderness Area
Primary	Wildland Provincial Park
Secondary	C5 Licences
Tertiary	Blue Bonna Trails
	Blue Bonna Coat Creek Camp



1:20,000



Created By: Spray Lake Sawmills (1990) Ltd.  
Date: May 5, 2020  
Author: Kalina Velez, RPF  
Any use or duplication without permission is prohibited.  
This map was developed using available information and  
Spray Lake Sawmills (1990) Ltd. makes no warranty for  
the accuracy or completeness of this map.



Source: Esri, DigitalGlobe, GeoEye, Earthstar Geographics, CNES/Airbus DS, USDA, USGS, AeroGRID, IGN, and the GIS User Community