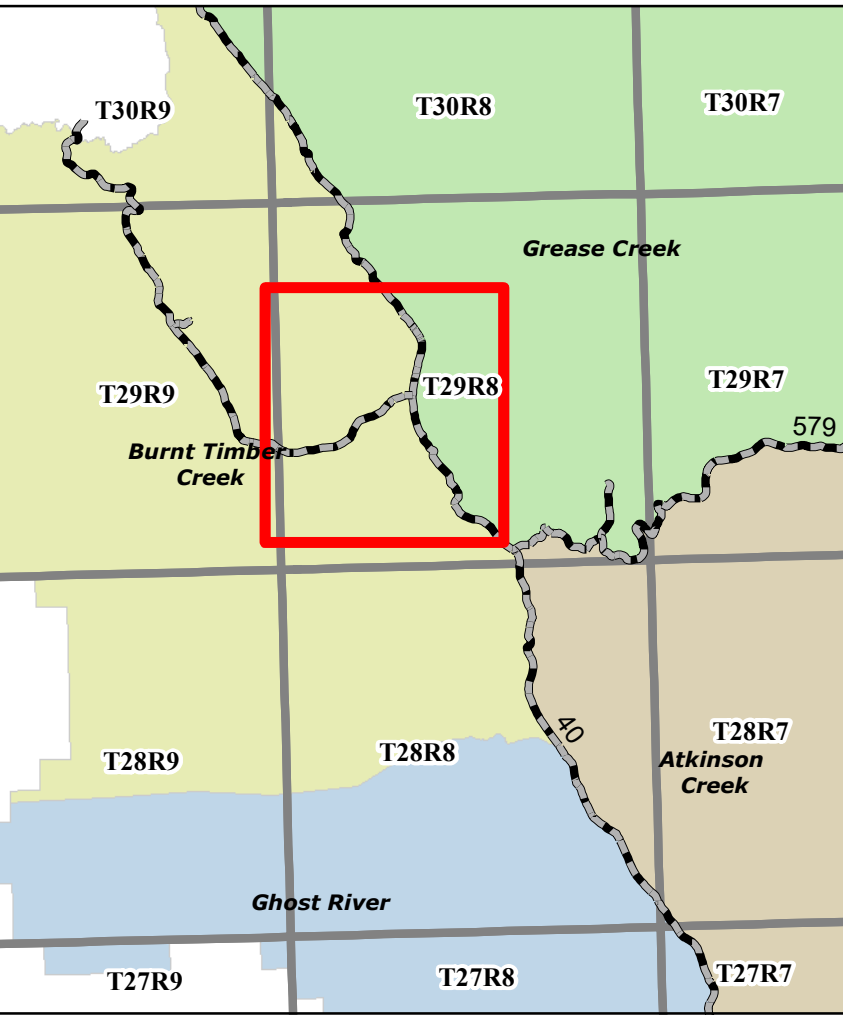
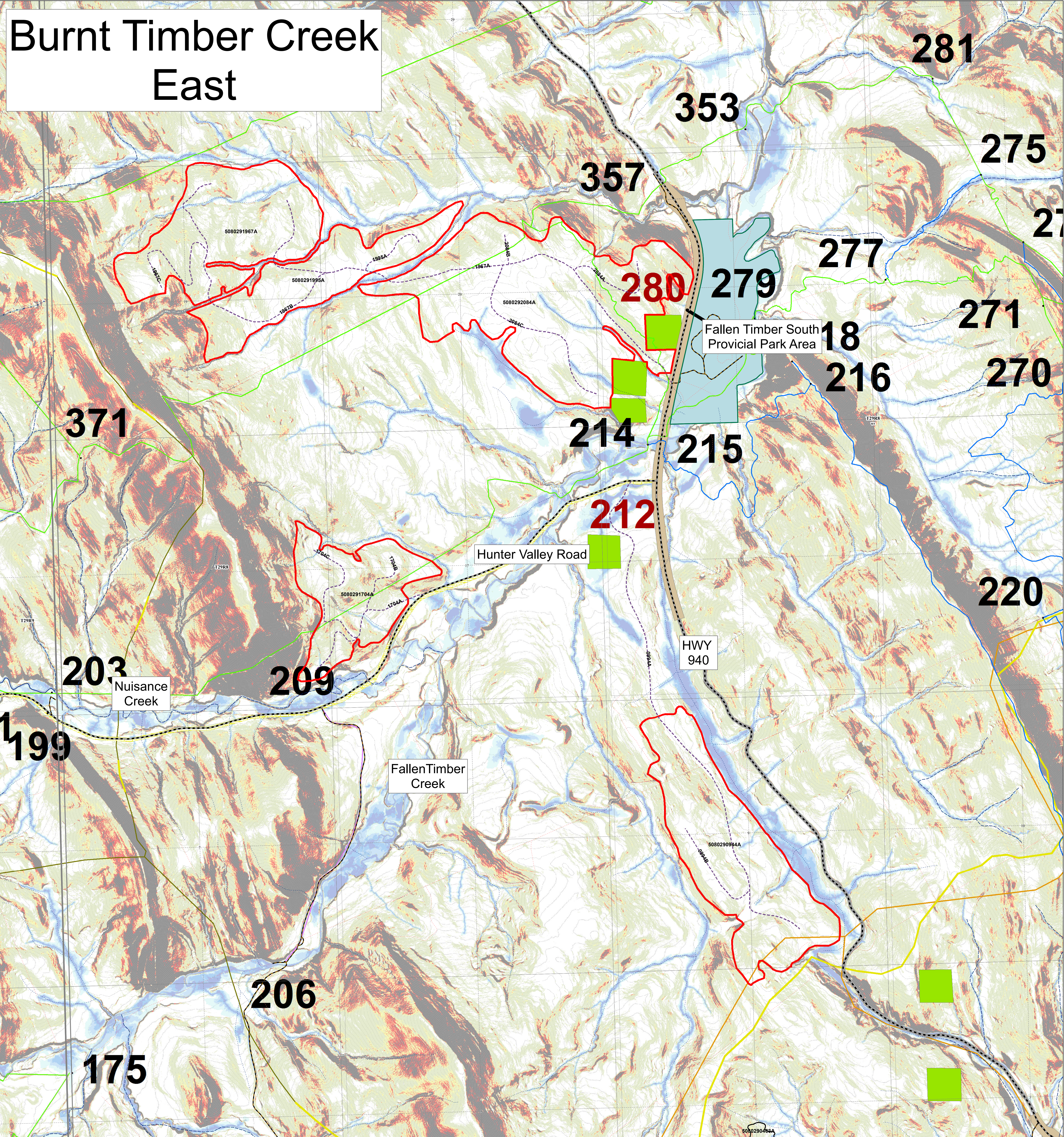


Burnt Timber Creek East



FMA & B9

Transportation

- Road - Paved
- Road - Gravel
- Truck Trail
- Cutline/Trail
- Railway
- Other Trails

Hydrography

- Ephemeral
- Intermittent
- Transitional
- Small Permanent
- Large Permanent
- Retention
- Cultural
- Grazing, Grazing
- Recreation
- Vegetation
- Water
- Wildlife

Cutblocks

- Harvested, Complete
- In Progress
- Laid Out
- Preliminary
- Reforested
- Retention
- Planned
- Laid Out
- Constructed
- Reclaimed - Total
- Reclaimed - Partial
- Reclaimed - Seasonal

Planned Watercourse Crossings

- Bridge
- Box Crib
- Half Pipe
- Cordoury
- Culvert
- X Drain
- Active Watercourse Crossings
- Bridge
- Box Crib
- Half Pipe
- Active In Stream Crossings
- Culvert
- Cordoury
- Logfill
- X Drain

Stakeholder Landuse

- License of Occupation
- Mineral Surface Lease
- Pipeline Agreement
- Easement
- Forestry Road
- Misc. Permit
- Pipeline Installation Lease
- Parks Mineral Surface Lease
- Roadway
- Surface Material Lease
- Rural Electrification Association Easement
- Right-of-Entry Agreement
- Country Road
- Surface Mineral Lease
- Vegetation Control Easement
- TP&R Easement
- TP&R License of Occupation
- Grazing Allotments
- Grazing Leases
- Traplines
- Fence Lines - Internal
- SLS PSPs - Buffers
- Gov PSPs - Buffers

Parks and Reserves

- Provincial Rec Area
- PNT
- Heritage Rangeland
- Ecological Reserve
- Natural Area
- Wilderness Area
- Wildland Provincial Park
- National Park
- Designated Trails
- Truck Trail (4x4)
- Quad
- Single Track
- KC Trails

