



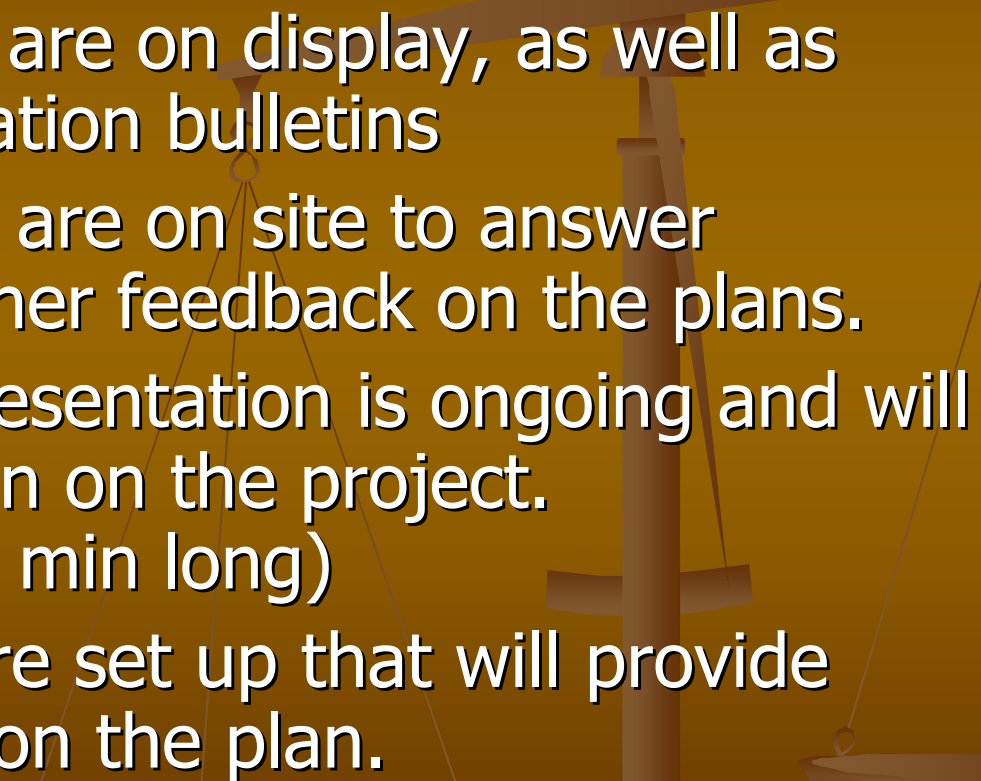
Bragg Creek Harvest Plan Open House January 26, 2012



Spray Lake Sawmills

Welcome, feel free to review the plans, and other sources of information. Spray Lake Sawmills staff is on site to answer questions and gather feedback.

Open House Format

- The harvest plans are on display, as well as maps, and information bulletins
 - SLS and SRD staff are on site to answer questions and gather feedback on the plans.
 - This slide show presentation is ongoing and will provide information on the project. (approximately 25 min long)
 - Several displays are set up that will provide more information on the plan.
- 

What's Happening??



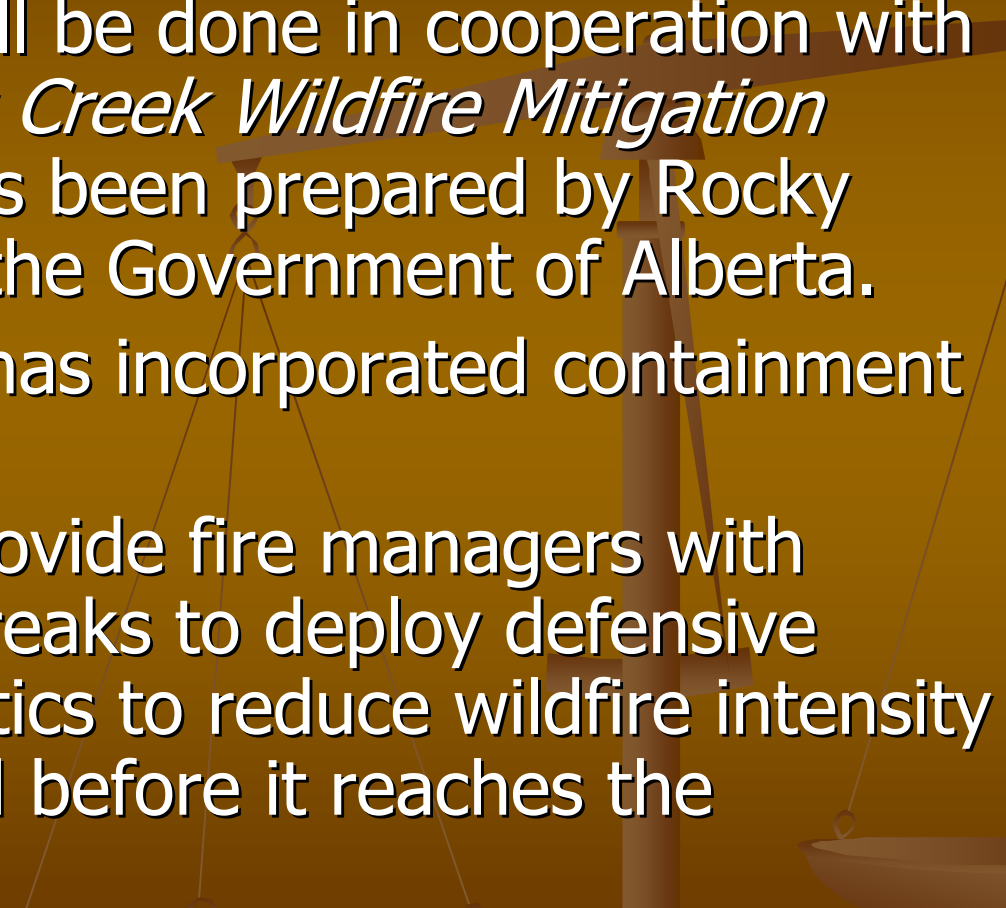
- Spray Lake Sawmills (SLS) has a Forest Management Agreement (FMA) that overlaps the Kananaskis Forest Land Use Zone.
- This disposition gives SLS the rights to harvest the timber from this area.
- Part of the 2012-2013 plan is to harvest 703ha within the Kananaskis FLUZ (550ha north of HWY 66 & 153ha south)

What's the objective of the logging?

- The logging has several objectives
 - Forest Management
 - Timber supply for Spray Lake Sawmills
 - Fire containment areas

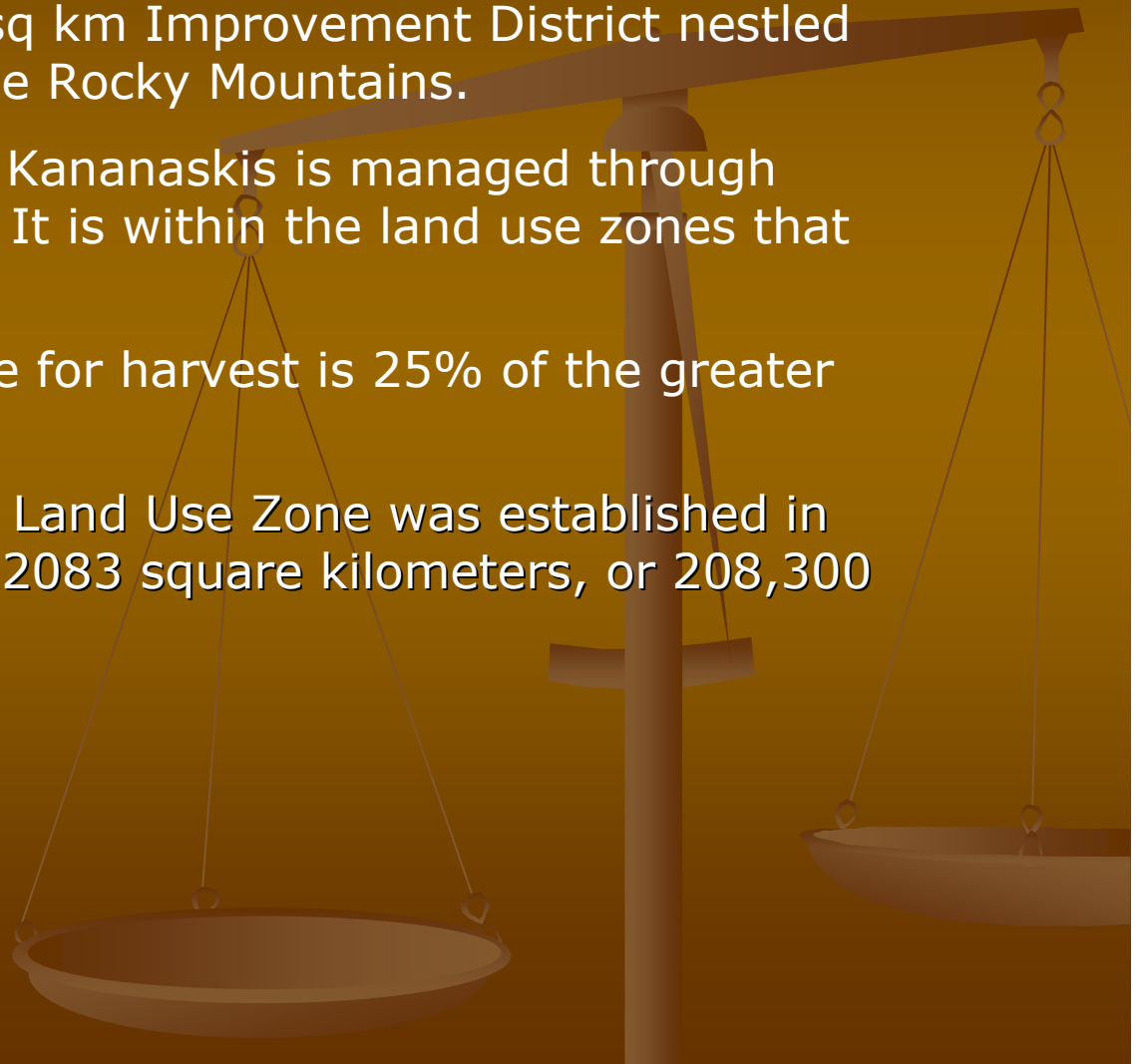


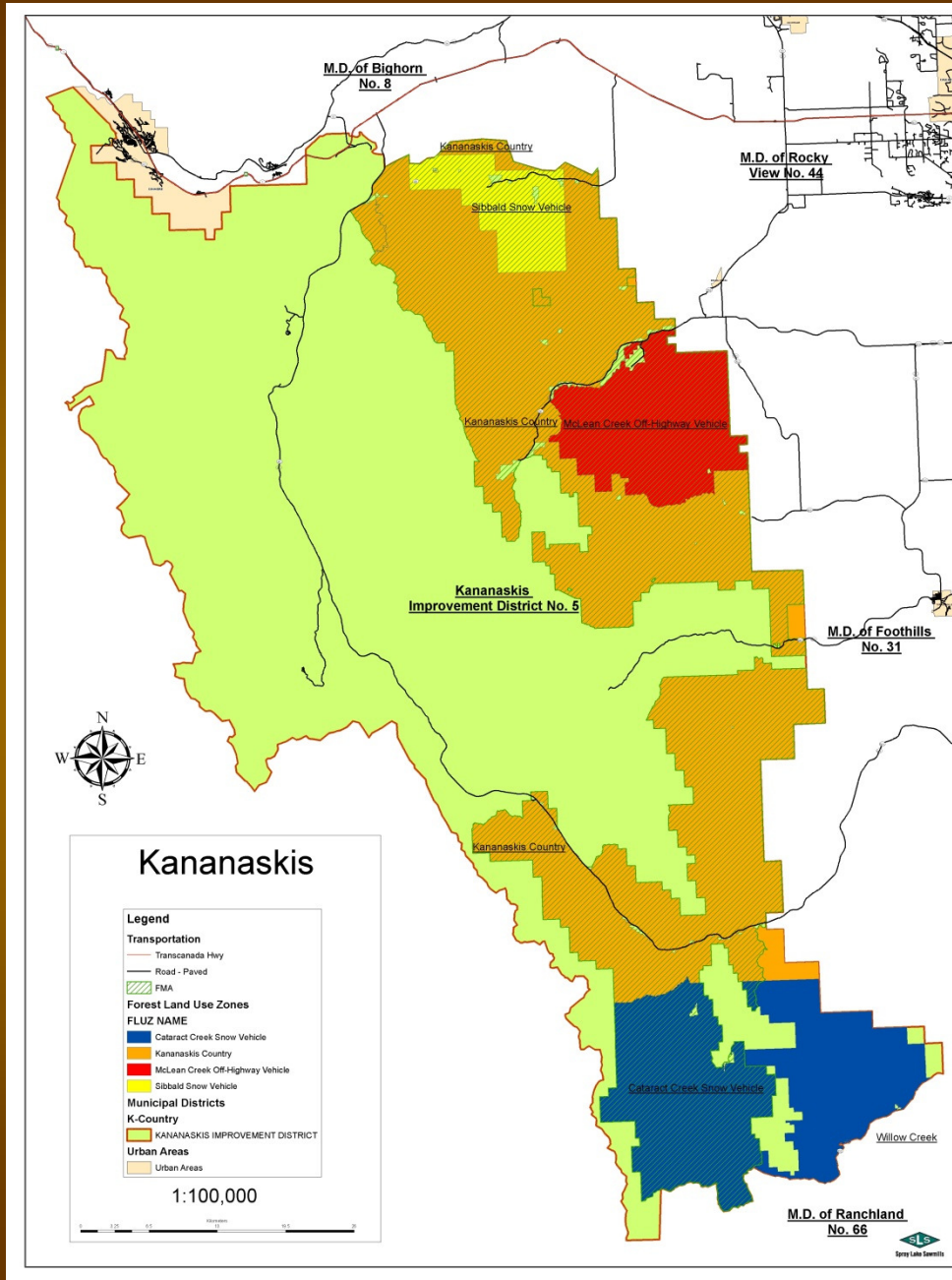
How does it meet the firesmart objective?

- This harvesting will be done in cooperation with the *Greater Bragg Creek Wildfire Mitigation Strategy* which has been prepared by Rocky View County and the Government of Alberta.
 - Harvest planning has incorporated containment area design.
 - The intent is to provide fire managers with operational fuel breaks to deploy defensive strategies and tactics to reduce wildfire intensity and rate of spread before it reaches the developed areas.
- 

What is Kananaskis?

- Kananaskis is a 4200 sq km Improvement District nestled between Hwy 22 and the Rocky Mountains.
- The eastern portion of Kananaskis is managed through Forest Land Use Zones. It is within the land use zones that SLS harvests.
- The total area available for harvest is 25% of the greater Kananaskis area.
- The Kananaskis Forest Land Use Zone was established in 1979. The FLUZ covers 2083 square kilometers, or 208,300 hectares.





What is a FLUZ?

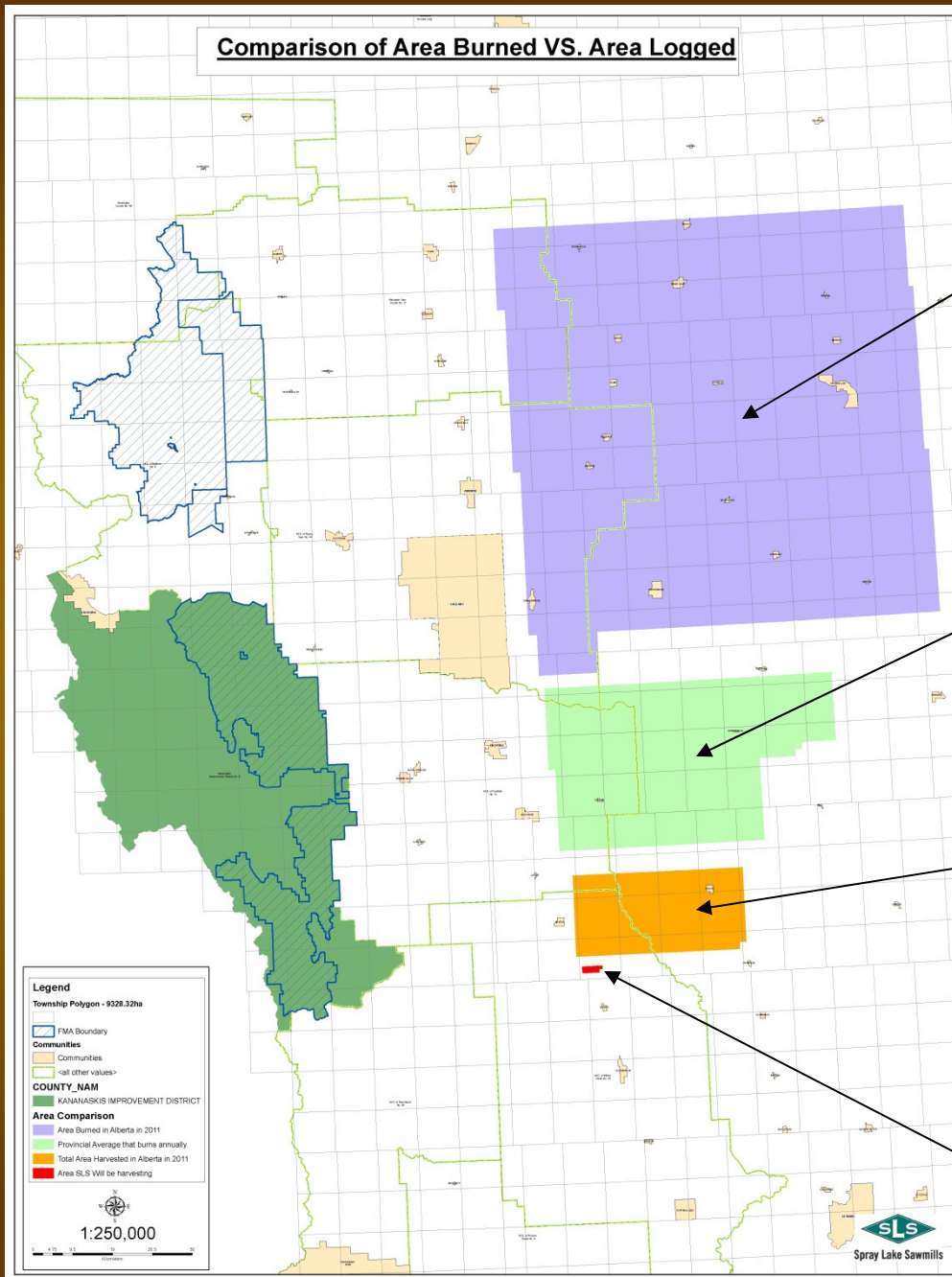
- “A Forest Land Use Zone (FLUZ) is an area of public land to which legislative controls apply under authority of the Forests Act, Forest Recreation Regulation (343/1979) to assist in the management of industrial, commercial, and recreational land uses and resources.
- A FLUZ is created for a specific land base and the unique conditions that exist within that land base.
- A FLUZ is established to better manage Alberta’s busy landscape and the land use activities, including recreation that occurs in a specific area.
- FLUZ conditions are designed primarily to protect areas containing sensitive resources and manage conflicting land-use activities.
- FLUZs are not designated as parks or protected areas.”



-SRD

The Plan put into Perspective

- On average, SLS harvests 1450ha annually from its FMA and quota sources
- In 2011 alone, 946,687.5ha were burned in Wildfires in Alberta
- It would take SLS 652.9 years to log the equivalent amount of land
- The 10 year average for wildfires in Alberta is 220,874.9ha
- It would take SLS 152.3 years to log the equivalent of the annual provincial average
- The FireSmart harvesting accounts for 0.3% of the Kananaskis FLUZ area



Area burned in Alberta in 2011

-946,687.5ha

10 year annual average burn area in Alberta

-220,687.9ha

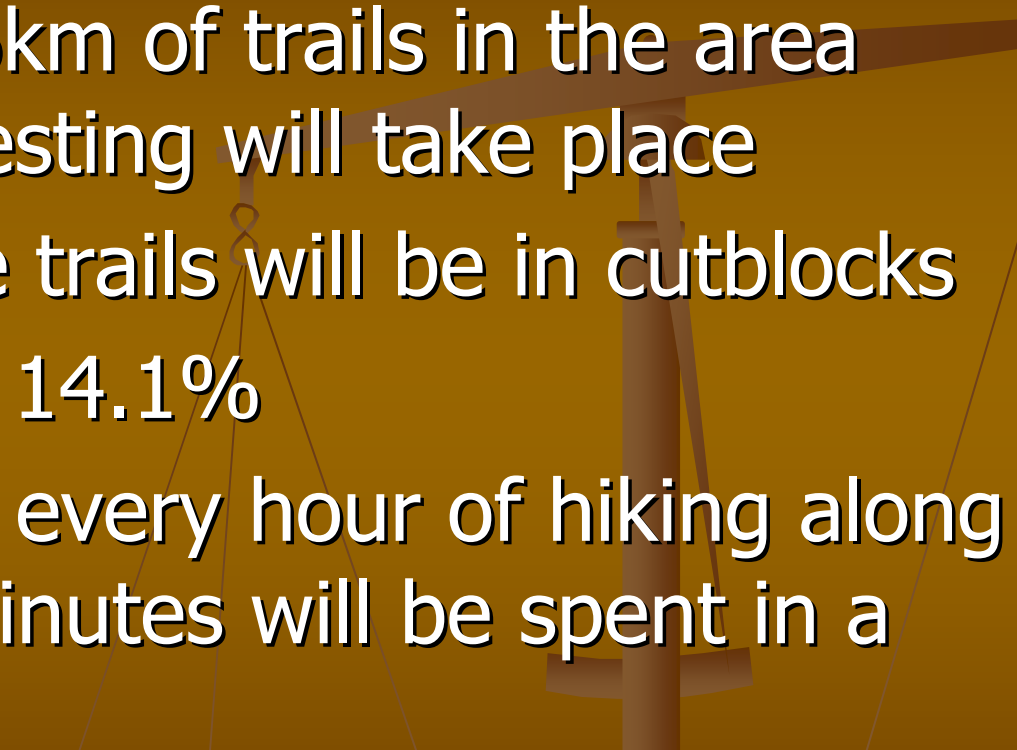
Total area logged in Alberta in 2011

-77,446.8ha

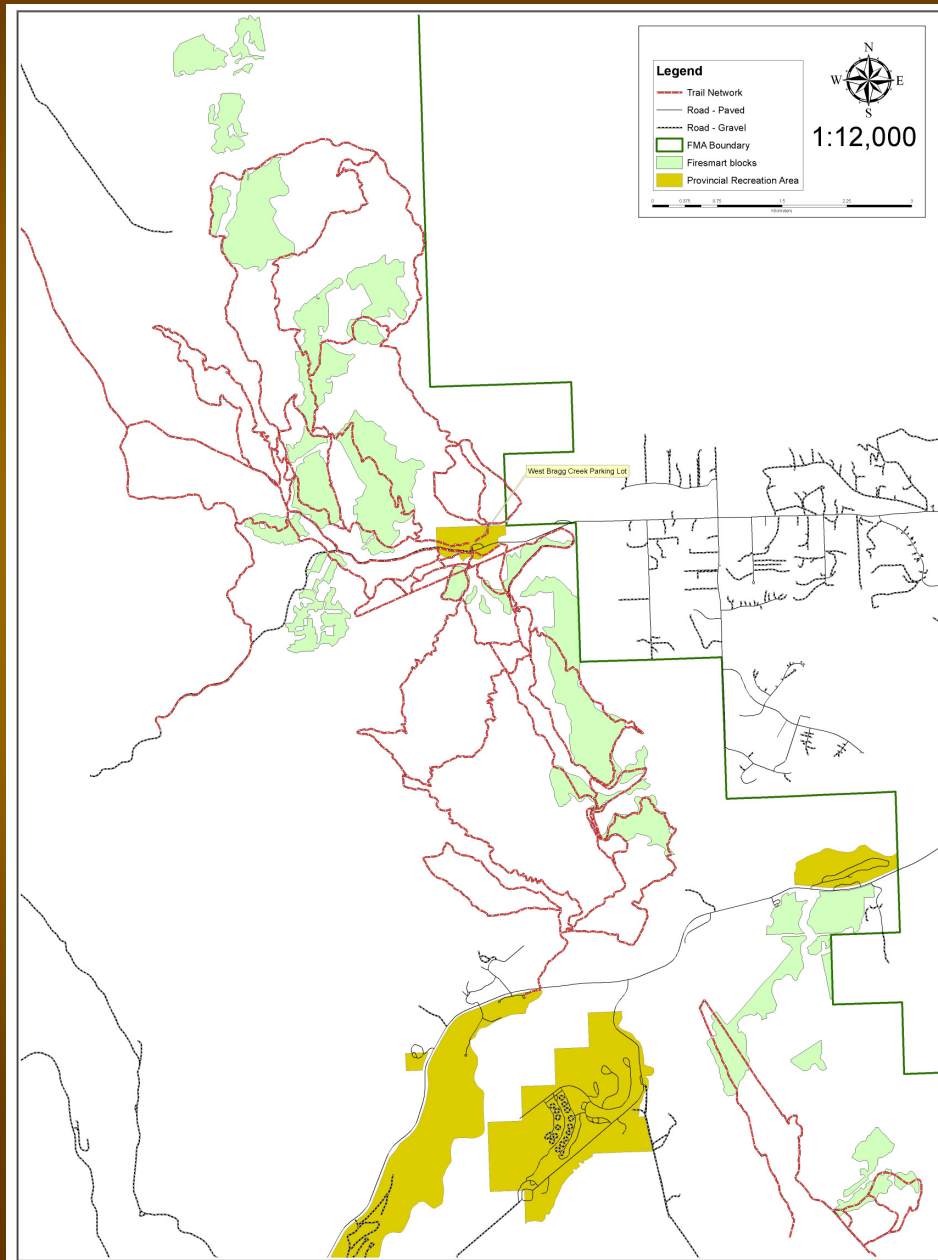
Total area to be logged as part of the Bragg Creek Timber Harvest Plan

-703ha

How much of the Trail System will be Affected?

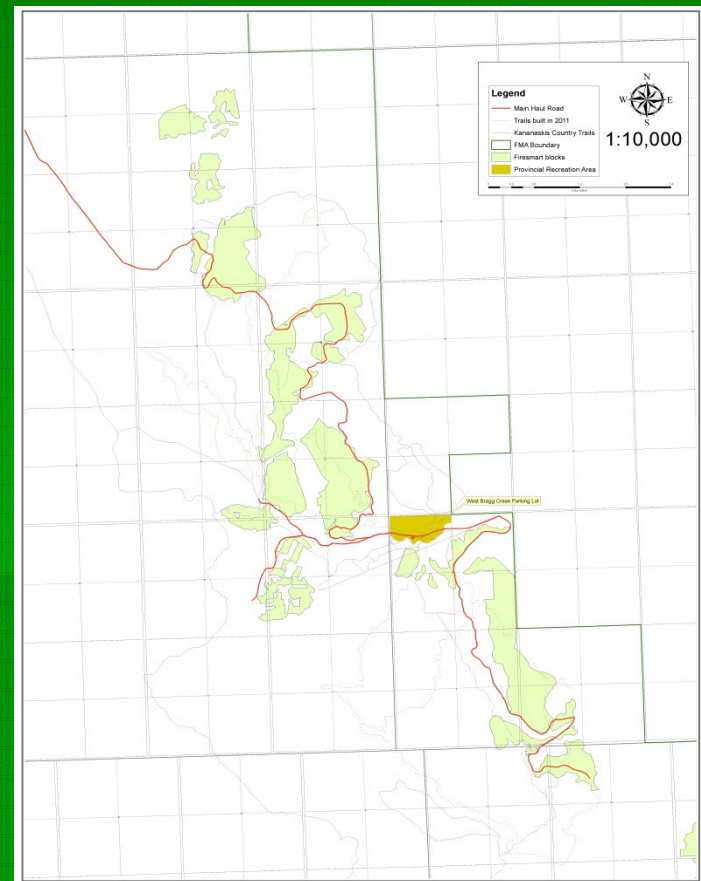
- There are 120.6km of trails in the area where the harvesting will take place
 - 16.9km of these trails will be in cutblocks
 - That is equal to 14.1%
 - On average, for every hour of hiking along the trails, 8.5 minutes will be spent in a cutblock
- 

Map of trails and Blocks



Will the log haul be using the West Bragg Creek Road?

- Instead of using the West Bragg Creek Road, SLS will be building a different road that will allow us to haul timber out through the Homestead Road, Sibbald Trail and Hwy 1.
- Hwy 66 and 22 will be used for the southern most blocks



How Many Hectares Will Be Logged?

- The total number of hectares to be logged is 703.
- 550ha of that will be coming from the area west of Bragg Creek
- The remaining area is coming out south of HWY 66

Where Can I find a Map of the Proposed Logging?

- A map can be found at this open house as well as on Spray Lakes Sawmills' Website
- www.spraylakesawmills.com

If the plan is to create a containment line, then why is SLS planning on reforesting the Cutblocks?

- With the help of SRD and wildfire specialists, the plan was designed to achieve multiple goals.
- Creating a containment line is only one objective of this plan.
- Sustained yield management and timber supply is another objective.
- The timber in this area is part of the FMA and would have been scheduled for harvest at some point.

Reforestation Continued....

- SLS is working with SRD to assess the needs of fire containment and determine the reforestation strategies over the long-term

Will SLS be buffering trails?

- SLS will leave lesser vegetation such as immature trees, shrubs, and non-merchantable species adjacent to trails.
- The risk of blowdown is too great and the integrity of the containment line would be compromised if treed buffers are left behind.
- Removing mature trees will ensure lower trail maintenance and greater wind firmness of vegetation as it grows back

What will happen to the trails??

- All designated trails will be made fully functional once the harvesting is completed.
- SLS will communicate with trails groups and TPR to make sure any damage to trails is fixed.

What is the time line?

- Road construction will start around July. Harvesting will follow within a couple weeks.
- Harvesting is expected to be completed within 4 months.
- The log haul will continue until it is completed. (Approximately March of 2013).

Timeline continued....

- During the summer of 2013, the cutblocks will be site prepped for planting.
- During the spring and summer of 2014 the cutblocks will be planted
- Road reclamation will immediately follow planting.
- Please note that weather and other unforeseen delays may arise.

Cutblock Progression

Year 0 - Cutblock Being Felled



Year 1 & 2 – site prep and planting



Year 2 – Road reclamation



Year 8 – Regeneration Surveys



What steps have been taken to include other interests and values?

- Managing for all aspects of the forest is a delicate balancing act....
- During the development of the Detailed Forest Management Plan (DFMP), SLS consulted with:
 - the Public,
 - Sustainable Resource Development,
 - Biologists,
 - Hydrologists,
 - Stakeholders,
 - Foresters,
 - and several other organizations and specialists to include their interests into the plan.
- Please see the display on the timeline of consultation for more information.

Other Interests Continued....

- SLS activities are directed by the Operational Ground Rules (OGRs).
- The DFMP and OGRs dictate how we manage for aesthetics, wildlife, water quality, and recreational use. These can be found online at www.srd.gov.ab.ca

Other Interests Continued....

- A Land User Agreement document has been developed by several stakeholders in the area, including SLS, Ranchers, Trails groups, the Firesmart Committee, SRD, Wildfire Specialists and TPR
- The Land Users Agreement talks about how the different users will work together to share the landscape and minimize impact on each others activities

Aesthetics/Recreation

- Aesthetics are an important part of the recreating experience and must be balanced with operational limitations as well as the forest management objectives.
- SLS manages for aesthetics by designing cutblocks of various sizes with irregular shaped boundaries.
- Aesthetics are managed for on a landscape level.

Aesthetics/Recreation Continued...

- SLS reforests all cutblocks
- Retention patches are left to break up the visual continuity of the opening
- The forest must be viewed on a long term basis and disturbance must be accepted as an inevitable part of the forest cycle

Wildlife

- Cutblocks are designed to provide a minimum distance to hiding cover for animals
- Harvesting/disturbance provides important habitat for several small mammals and birds as well as forage for ungulates.
- Wildlife habitat modeling is done at the Detailed Forest Management Plan stage to ensure that harvesting has minimal impact on wildlife
- Operational Ground Rules dictate activity to minimize impact on wildlife.
- The Integrated Resource Plan designates sensitive wildlife areas where harvesting is not allowed, and imposes restrictions on other areas

Water Quality

- Harvesting Practices have been approved by professional hydrologists
- Operational Ground Rules dictate harvesting practices around water
- Watercourses are buffered according to their classification and the OGRs
- All watercourse crossings must be approved by SRD.
- Watercourse crossings are designed to be temporary and must comply with the Operational Ground Rules and legislation

How is SLS consulting with the public?

- SLS has been gathering public input for its plans since 2003.
- A detailed chronology of the consultation process is provided on a poster at this open house.
- This open house is a continuation of the public consultation process.
- Please provide feedback in written form to an SLS staff member. Feedback can also be sent into woodlands@spraylakesawmills.com or faxed to : 403-932-6675



What about public safety?

- SLS will regularly inform trail organizations as well as Sustainable Resource Development and Tourism, Parks and Recreation of the harvesting progress.
- These organizations may temporarily close trails for public safety.
- Signs will also be put up to warn people of active operations.
- Please fill out the sign-in sheet to be put on the mailing list



Why clear cutting?

- Harvest boundaries are designed to emulate fire patterns.
- By having boundaries follow topographic features and timber types, we can create an opening that is comparable to how nature would handle the situation if left to fire.
- Retention patches of various sizes are left standing throughout the cutblock



Clear cutting continued....

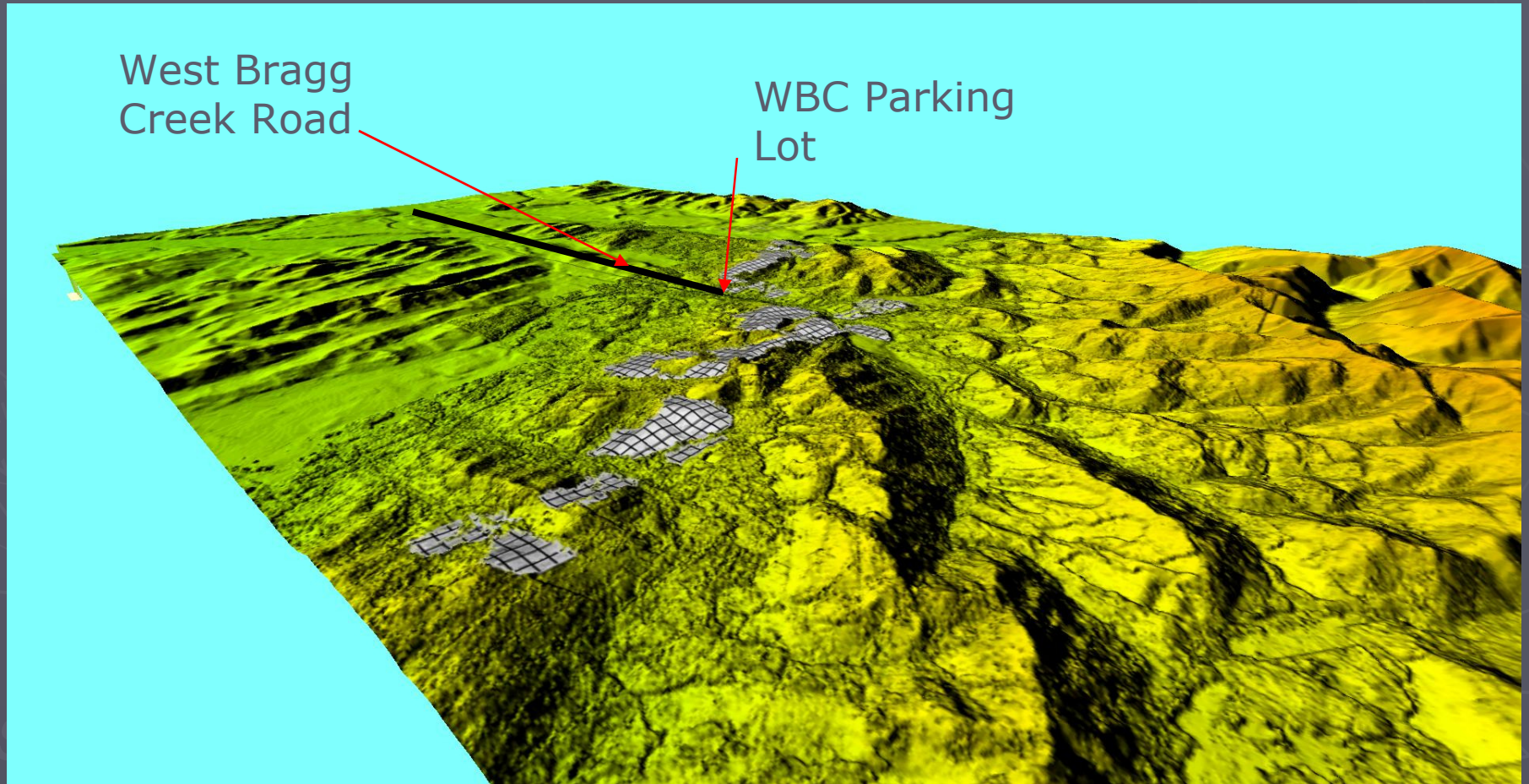
- The forests in this area are predominately pine.
- This is due to the type of soils, climate and natural disturbance history in this area.
- In order to regenerate properly, pine needs ample amounts of sunlight to provide the heat that cones need to open and release their seed.
- SLS supplements by planting a pine/spruce mix



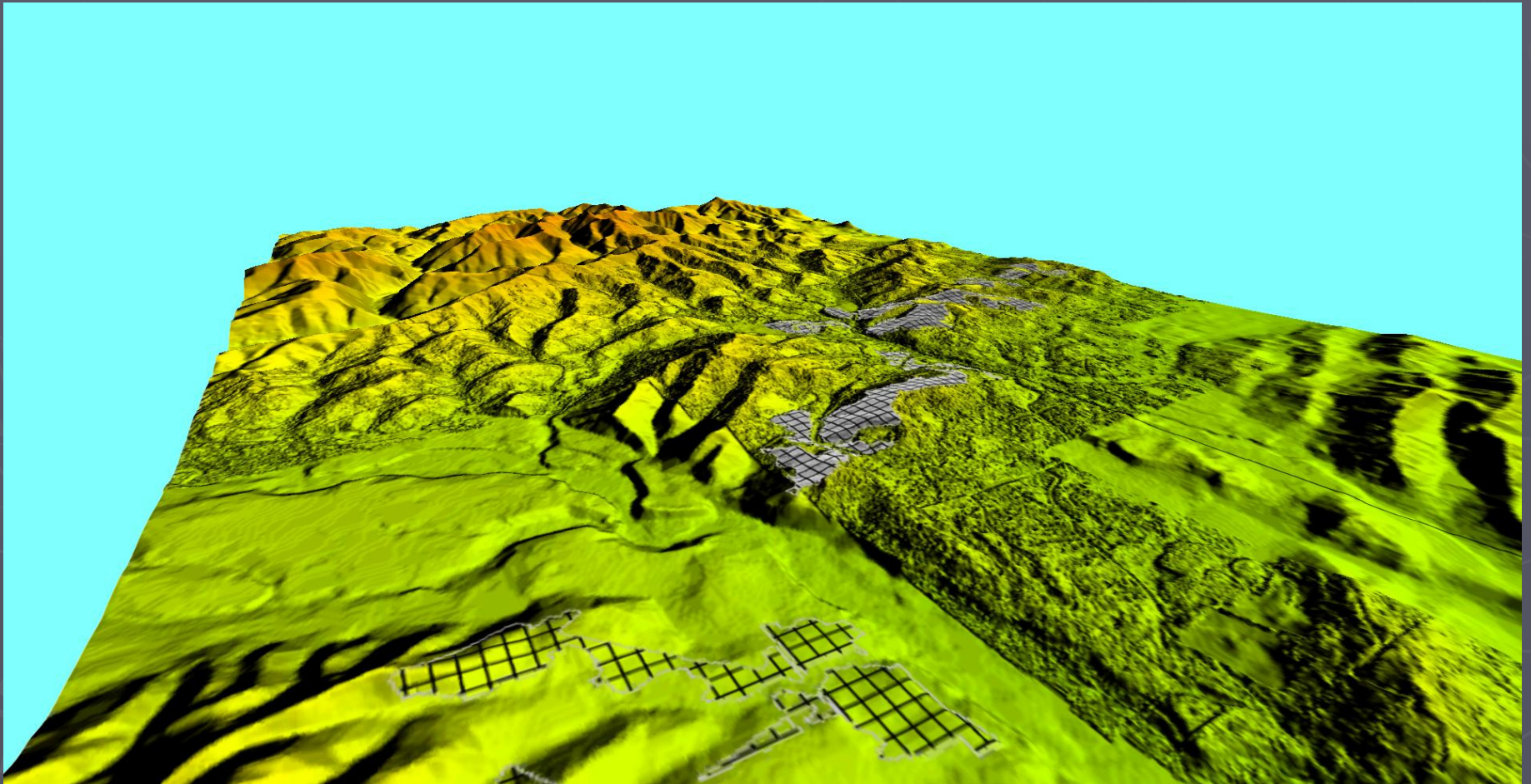
What will the area look like once the harvesting is done?

- ▶ The following pictures show computer generated images of what the area will look like post harvest.
- ▶ The “greyed out” areas with the cross hatch pattern are the cutblocks
- ▶ Others features are pointed in the slides

Aerial Overview from the NW corner of harvest area:



Aerial Overview from the SE corner of harvest area:

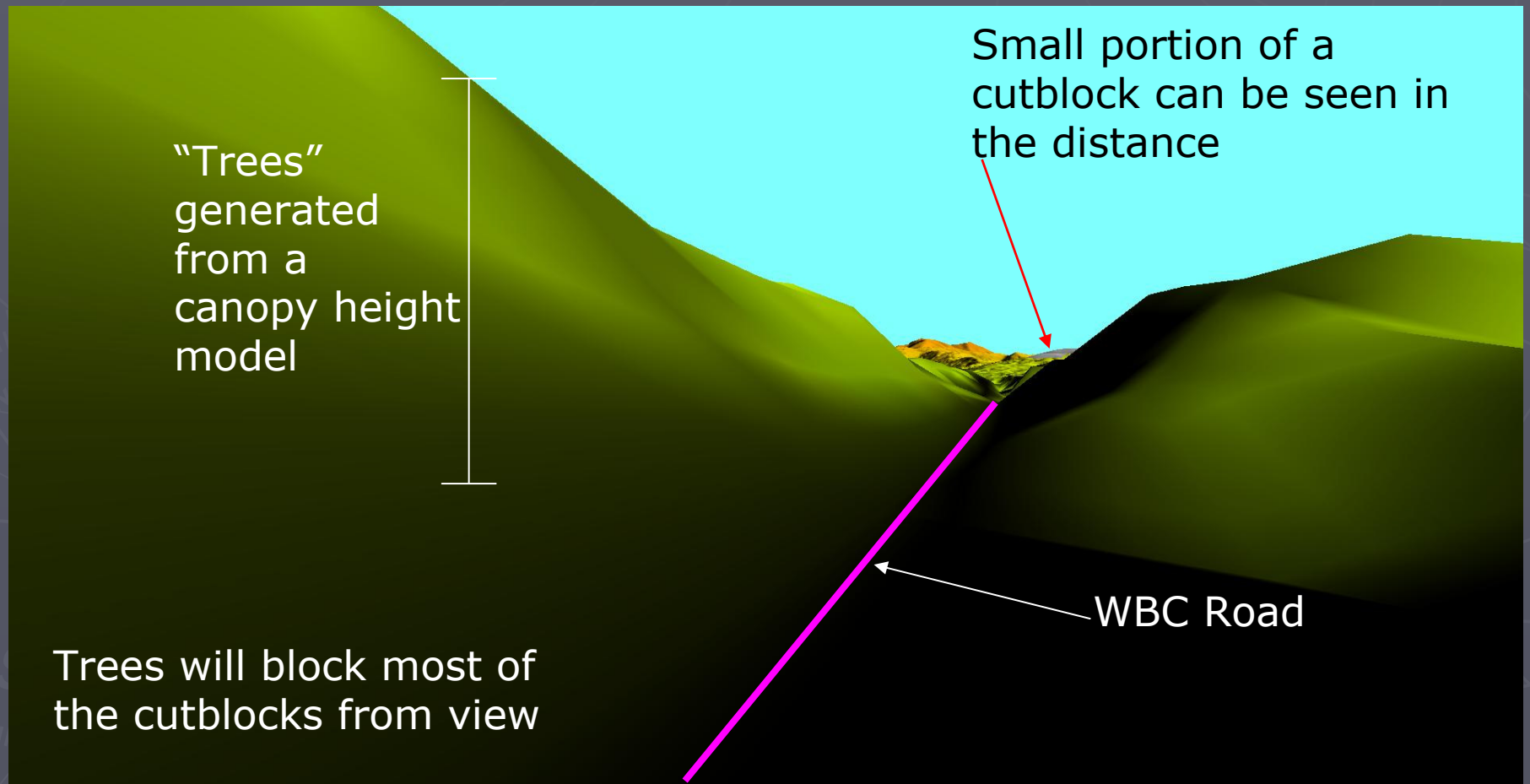


View From Allen Bill Pond:

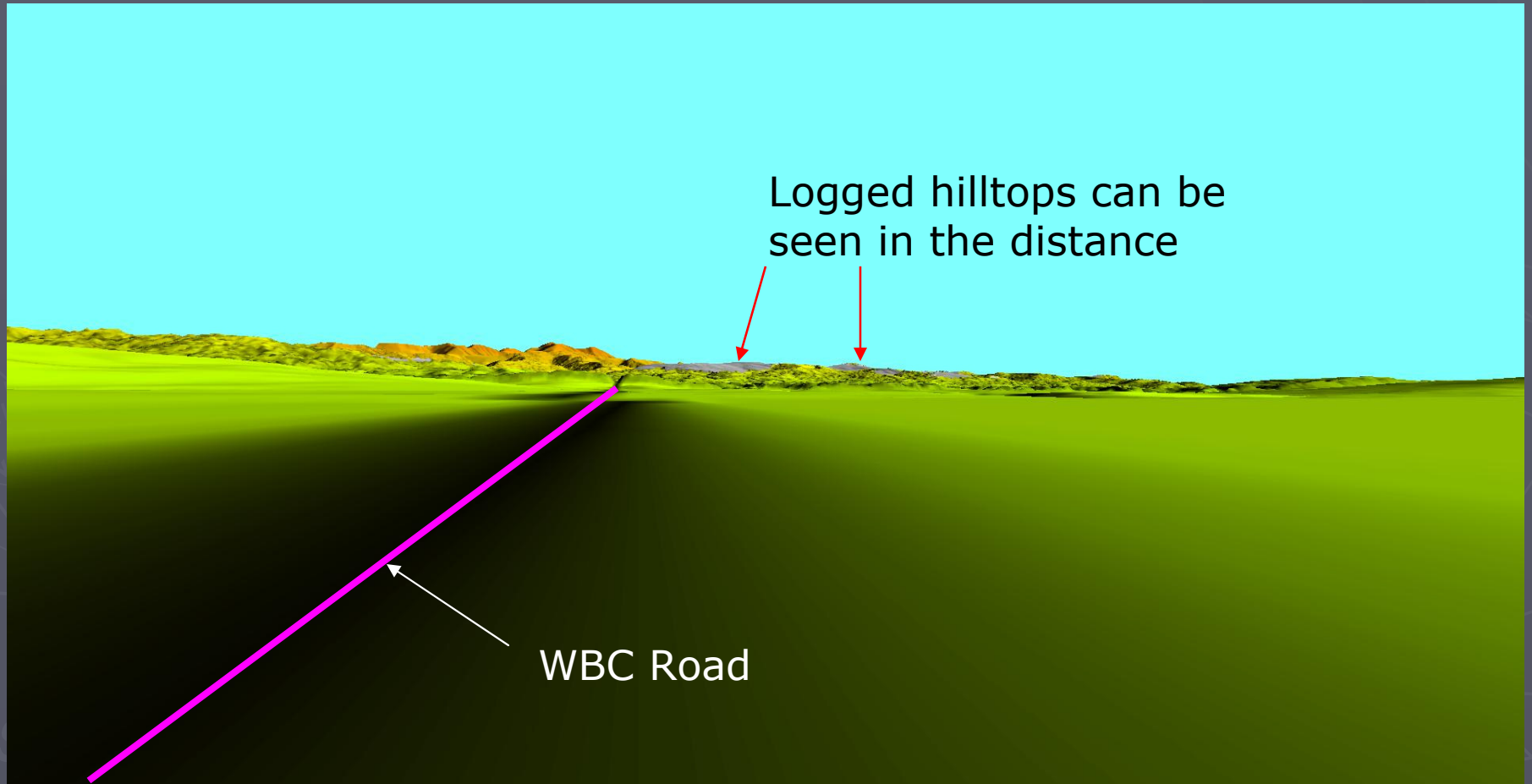
Small portion of a cutblock can be seen in the distance



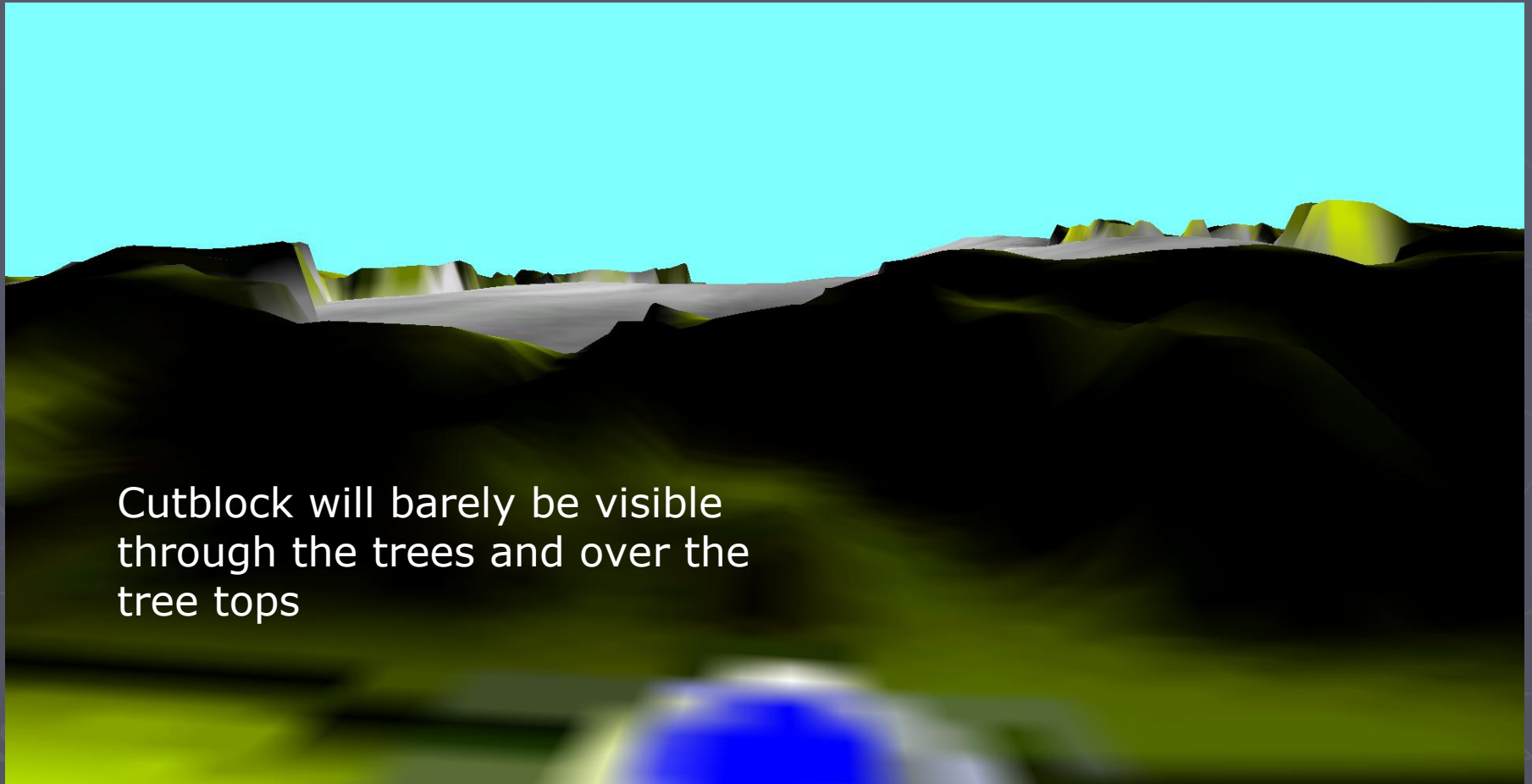
View of West Bragg Creek area approximately 2.5km from parking lot:



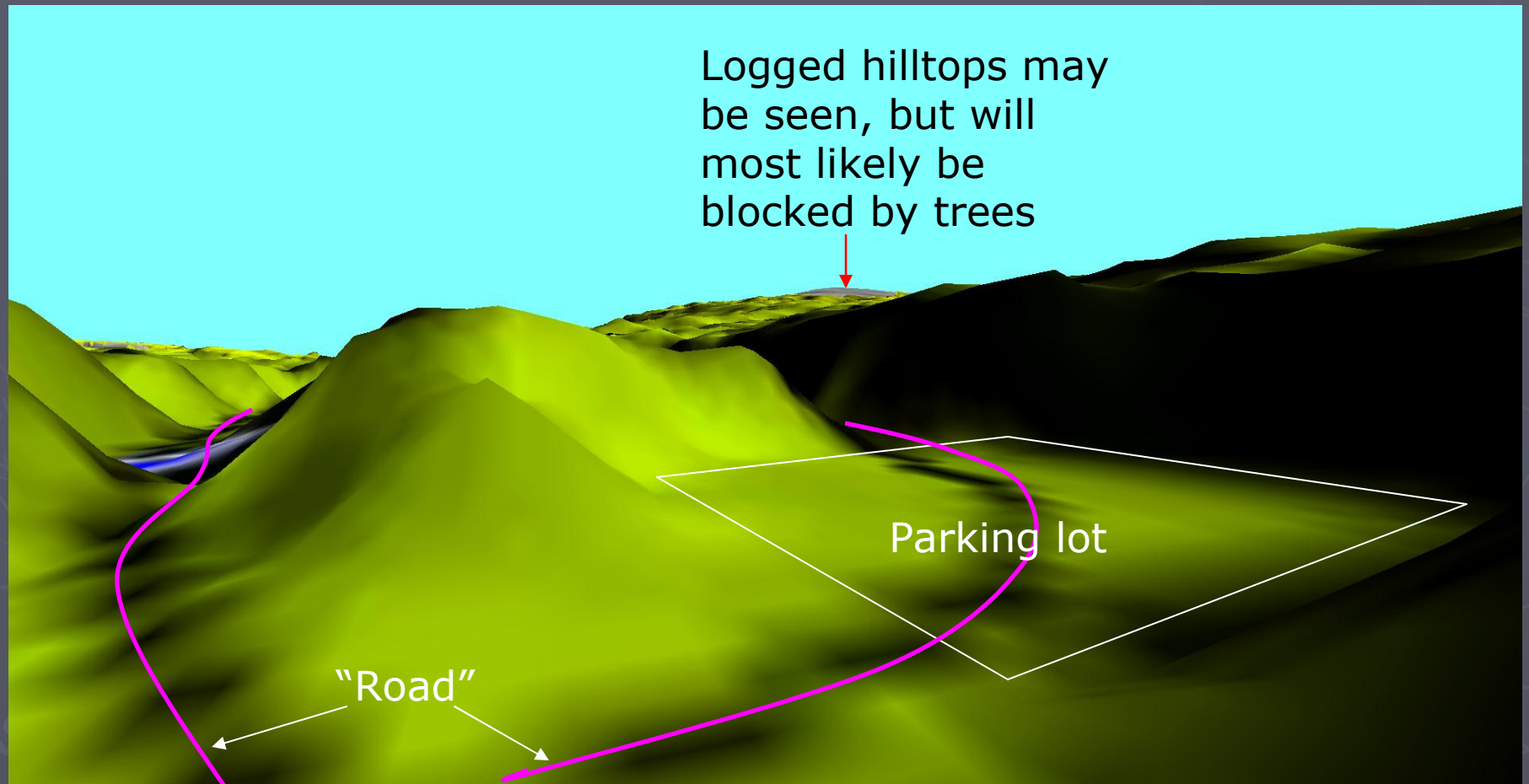
View of West Bragg Creek area approximately 4.5km from parking lot:



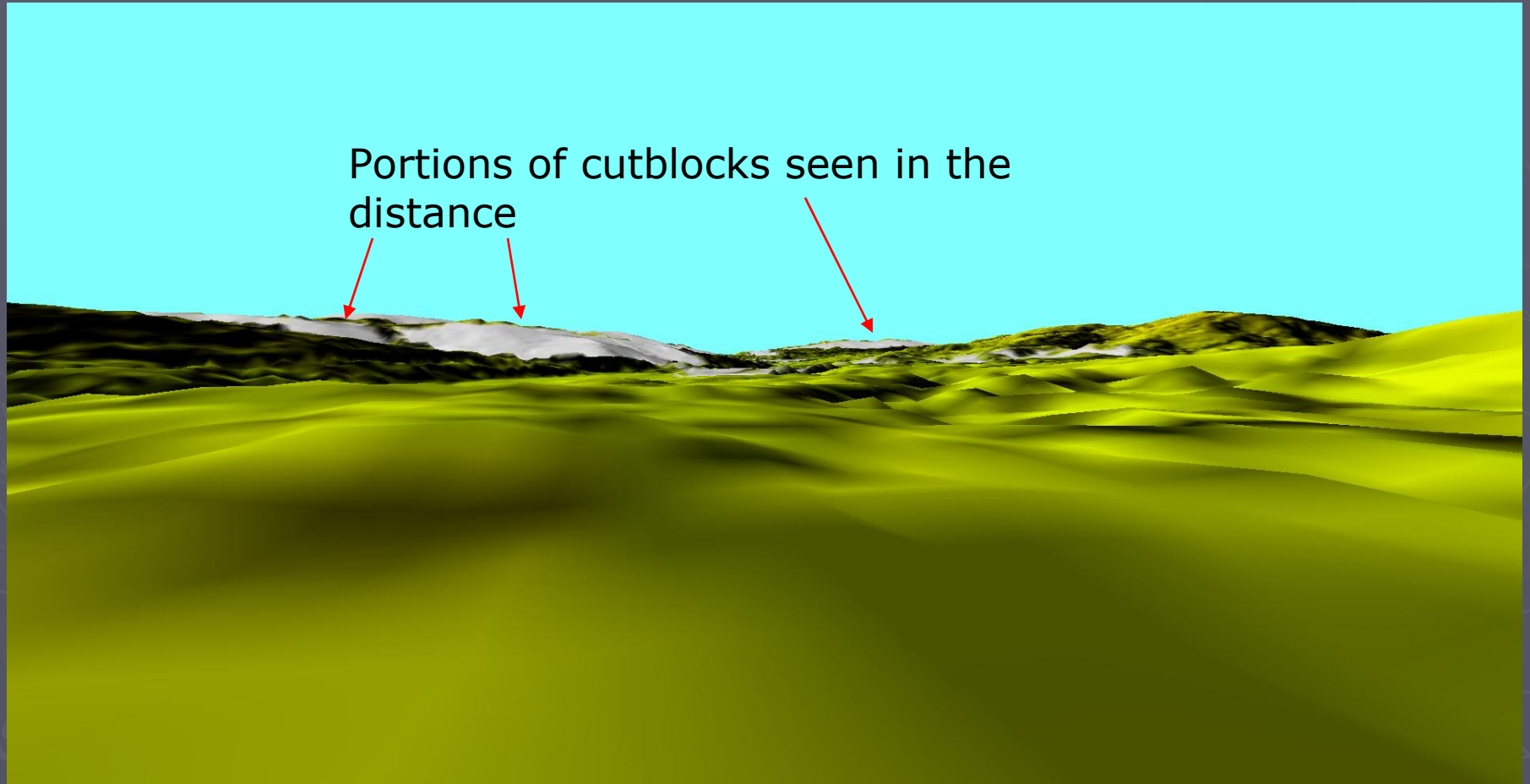
View of block 1323 standing directly south of it on the road:



View from the entrance to the WBC parking lot:



View of Area from a trail west of the cutblocks:



SLS asks you to recognize all stages of a forests development and to see the individual beauty of each stage of the cycle. Through understanding of each others interests, we can all share the same landscape.

